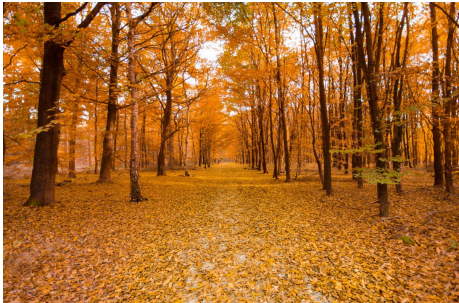


November 2022

The Wood
Post

Woodland Community Updates

Fall Forest Fire Hazard October 1- December 15
Find out what you need to know [here](#).



▮ *Being Thankful* ▮

In this Issue (detail text below/or follow links)

- Fire Hazard Be Aware All Month [here](#)
- November 5 KY Maple School Webinar [here](#)
- Tree Seedlings on Sale **Now** [here](#)
- WOI: Landowners for Oaks Series [here](#)
- Tuesdays: Yale Forestry Forums: text below
- Wednesdays: From the Woods Today [here](#)
- Thursdays: Forest Carbon U. Webinars [here](#)
- March 27-29 KWOA Annual Meeting [here](#)

2022 Kentucky Maple School **November 5 | 9am - 12pm ET**

Join us as we tap into Kentucky's untapped resource!

The School allows for maple syrup producers to learn about current topics in maple production and allows producers to network and share ideas.

This is a Zoom Webinar. Registration is required. [Register Now](#)

Wood You Not Know It?

Riddle #10 November 2022: Beginning our journey through the tree canopy! What fraction of all terrestrial creatures live about one hundred feet or more above our heads in the tree

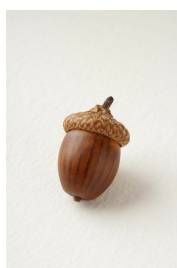
canopy? See if you can figure it out & send us your answer to: info@kwoa.net

Riddle #9 October 2022 Answer: Growth in the diameter of plants is due to the cell divisions in the cambium, an extremely thin cylinder of meristematic tissue found just under the bark. New cells are formed on both sides of the cambium each year. Those to the inside make up the xylem, which conducts water and nutrients; and those to the outside make up the phloem, which transports sugars, amino acids, vitamins, hormones, and stored food. In the xylem, the fibers provide strength and the vessels allow water and nutrient flow to the leaves. More explanation about the components of tree trunks can be found [here](#).

You can find all our Woodland Riddles Series [here](#).

Tree Seedlings from the Kentucky Division of Forestry – On Sale NOW

The Kentucky Division of Forestry operates two seedling nurseries for the purpose of planting on public and privately-owned land. These nurseries offer different species of hardwoods and conifers for sale for planting on open crop or pastureland, developing a Christmas tree plantation, enhancing wildlife habitat, improving urban areas and reclaiming surface mining sites. The Division of Forestry is accepting orders for tree seedlings online through its new **Forestry Seedling Sales** store. Orders less than 10,000 total trees using a credit card should use the division's online store to place their order. Seedlings ordered from the store will be shipped by UPS. Those wishing to order seedlings and pay by check or want to pick up their seedlings at one of our two nurseries are asked to use the **Tree Order Form** and order through their local **branch office**. Division branch offices can answer questions or questions can be emailed to KYSeedlingSales@ky.gov.



"Why We Should All Be Chasing Acorns" is a guest essay in the *New York Times* by **Margaret Renkl** focusing on our beloved White Oak species. A few quotes from the article may whet your interest and compel you to get out there with squirrels collecting acorns!

She quotes Dr. Douglas W Tallamy saying, “*No other tree genus supports so much life,*” and refers to his excellent book *The Nature of Oaks: The Rich Ecology of Our Most Essential Native Trees* (read the KWOA Book Review [here](#)). After noting the commercial and ecological values of white oaks and she goes on to say:

“...But even though we know those things, “older white oak trees are not being replaced by younger white oak trees at a pace that will support long-term sustainability,” according to the White Oak Initiative”...(<https://www.whiteoakinitiative.org/>)... “The state of white oaks is just one example, but you know things are bad for a species when neither environmental nor business interests are being served by current attitudes and practices...”

Here's a link to the full article:

<https://www.nytimes.com/2022/10/17/opinion/oak-trees-conservation-ecosystems.html?smid=nytcore-ios-share&referringSource=articleShare>.

PLUS:

White Oak Initiative Introduces the Landowners for Oaks Series Available NOW!

This series, made up of 11 publications, is geared toward landowners engaged in upland oak management with a focus on white oak. Three of the publications provide information on the importance of oaks, their biology, and an overview of common management practices to enhance oak regeneration and growth. Eight publications provide landowners with basic information on common upland oak species, how to identify them and important management and utilization information. All factsheets in the series are available for download at <http://forestry.ca.uky.edu/woi>.

You can learn more about conservation efforts and how you can help on our website [here](#).

SAVE THE DATES

KWOA 2023 Annual Meeting

Theme: Recreation

Lake Cumberland State Resort Park (SRP)

Optional Programs : March 27

Official Meeting March 28-29

UPDATE: The Agenda is up on our website [HERE](#).

The 2023 programming theme is recreation; we'll explore options for enhancing recreational activities on your land. Topics range from Sporting Clays to Bird Watching to Farm Ponds and so much more!

- **Optional activities Monday, March 27:** Wolf Creek Fish Hatchery and evening discussion on the latest Carbon Credits options.
- **Official Meeting March 28-29:** Michaela Garske, the 2021 recipient of the KWOF's Kentucky Forest Leadership Scholarship, will make a presentation during the formal meeting time.

Stay tuned & you can always check for updates [here](#).



"From the Woods Today"

An award winning weekly internet show co-hosted by Renee Williams and Billy Thomas with UK Forestry and Natural Resources Extension

featuring segments focusing on Kentucky woodlands and wildlife. The show airs live on **Wednesdays at 11 a.m. ET.**

- You can watch via Zoom or Facebook Live at <https://www.kwoa.net/events/from->

[the-woods-today-november-topics](#)

- [Links to live shows are posted on \[www.fromthewoodstoday.com\]\(http://www.fromthewoodstoday.com\) just before the show. Join live or watch recorded shows later at the website.](#)

Yale Forestry Forums:

Fall 2022 Webinar Series on **Reconsidering Planted Forests for the 21st Century**, jointly hosted by The Forest School at Yale School of the Environment (YSE) and The Forests Dialogue (TFD). **Every Tuesday** from September 6 - November 15 from 11:30am-12:10pm US ET. Learn more: <https://yff.yale.edu/>

Disaster Support Resources: We have buttons on our home page that takes you [here](#) to the latest news we have on resource including a special note from Bob Bauer, KFIA Director about the Go Fund Me page: [Kentucky Forest Industries Flood Relief Fund](#).

- **AMERICAN CHESTNUT:** This is an outstanding episode of **From the Woods Today**. This episode covers the history of the American Chestnut in Kentucky and what you can do to help save it. The presenters are excellent (Rex Mann, Ken Darnell, and KWOA Director, Jimmie Sizemore; they **walk you through the process of hunting for and reporting American chestnut trees you find in the wild**. Ready to check it out? It is Episode 114 that aired on 8/12/2022: <https://www.youtube.com/watch?v=UCA4almp4hE>
 - **The National Alliance of Forest Owners (NAFO)** - Check out this very interesting website, reflecting the value of Kentucky's private working forests: <https://nafoalliance.org/in-your-state/?state=KY>.
 - **Abandoned Oil & Gas Wells: Learn more [here](#).**
-

Planning a Harvest? A Kentucky Master Logger must be on-site and in charge of every commercial logging operation (excluding horse loggers). Kentucky's best management practices must be used on every commercial logging operation (including horse loggers). Best to Check Out These Resources:

- [Kentucky Master Logger Program: https://masterlogger.ca.uky.edu](https://masterlogger.ca.uky.edu)
 - [Bad Actor Information & List: https://masterlogger.ca.uky.edu/bad-actor-information](https://masterlogger.ca.uky.edu/bad-actor-information)
-

Just so you know

- If you haven't already joined the KWOA network, click [here](#) to join.
- You can share our news! See links at the bottom of this message.
- You can always contact us; send a message to info@kwoa.net with questions, suggestions, news, or to volunteer

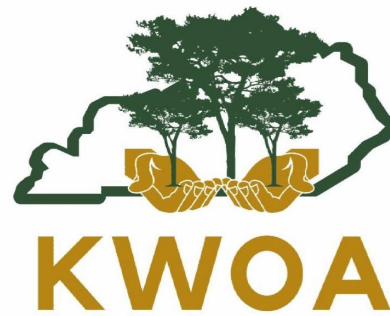
Growing Forests for Our Future! KWOA volunteers work year-round providing opportunities that benefit Kentucky's woodland owners and contribute to sustainable

forestry.

KWOA Mission
“Bringing people and woodland sustainability together”

**Kentucky Woodland
Owners Association**

P.O.Box 1201
Frankfort, KY 40602
info@kwoa.net
www.kwoa.net



Contact Us



Share This Email



Share This Email



Share This Email



Share This Email

Kentucky Woodland Owners Association/Foundation | P.O.Box 1201, Frankfort, KY 40602

[Unsubscribe info@kwoa.net](mailto:info@kwoa.net)

[Update Profile](#) | [Constant Contact Data
Notice](#)

Sent by info@kwoa.net in collaboration with



Try email marketing for free today!